

Legend® Series

Positive Displacement Blowers
& Vacuum Pumps



Sutorbilt Legend Series

Setting the Industry Standard for Over 70 Years

Gardner Denver's Sutorbilt® Legend® line of rotary positive displacement lobe blowers and vacuum pumps are the result of more than seventy years experience in the design, manufacture and support of superior industrial equipment.

Why the Sutorbilt line of blowers and vacuum pumps earned the name "Legend."

- Backed by one of the largest distributor networks in the industry
- Every Sutorbilt Legend blower/vacuum pump is built under rigid ISO 9001:2000 quality standards
- Each Legend is individually tested to meet rigorous performance specifications
- Requested by leading Original Equipment Manufacturers (OEMs) worldwide for a wide range of applications, due to the ability to customize the Legend to their specifications while meeting strict performance requirements
- A Legend is at the heart of an ever-expanding variety of air solutions working every minute of every day around the globe
- Available in 20 sizes with 4 different configurations
- The Legend Series delivers
 - Pressure to 15 psig
 - Vacuum to 16" Hg
 - Flows to 3,015 scfm

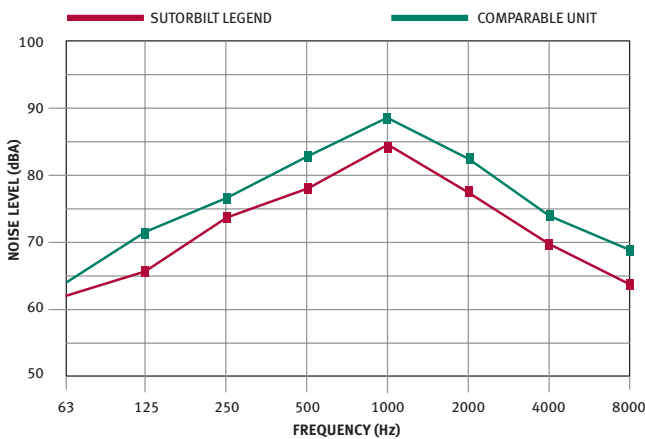


Proven Performance. Global Applications. Local Support.

QUIET OPERATION

The sound data shown below compares the Legend (red) and a comparably sized blower (green) operating at 3,275 rpm and 12 psig.

- Improved blower design reduces the sound pressure output of the Legend blower
- Typical reduction is 3 dBA which represents 50% less noise than the competition



SUPERIOR LOCAL SALES AND SERVICE

- Extensive network of authorized Gardner Denver/ Sutorbilt distributors
- Offers the most convenient local sales and service support in the industry
- Factory trained professionals are experts in blower/ vacuum pump technology
- Providing system installation guidance, troubleshooting and optimization recommendations for new or existing applications

EVEN A “LEGENDARY” WARRANTY

Every Sutorbilt Legend Series blower/vacuum pump is covered by a “Legendary” warranty: 24 months from the date of shipment or 18 months from the date of installation.

| INDUSTRY | APPLICATION |
|------------------------|---|
| Aquaculture | Aeration |
| Cement & Lime | Fluidization & Conveying |
| Chemical | Vacuum Processing & Conveying |
| Coal Bed/Landfill | Methane Gas Recovery |
| Dairy | Automated Milking |
| Dry Bulk Hauling | Trailer Unloading & Aeration |
| Environmental Services | Sewer Cleaning & Portable Restroom Services |
| Industrial | Material Vacuuming |
| Milling & Baking | Blending & Conveying |
| Oil & Gas | Gas Collection & Sparging |
| Power Generation | Fly Ash Conveying & Aeration |
| Process Gas | Gas Boosting |
| Pulp & Paper | Chip Conveying & Process Vacuum |
| Resin & Plastic | Processing & Conveying |
| Soil Remediation | Vacuum Extraction & Sparging |
| Vacuum Excavation | Potholing & Slurry Recovery |
| Wastewater | Aeration & Backwashing |

The above table illustrates industries which depend upon the Sutorbilt® Legend® to deliver clean, oil-free air to a wide range of global applications.

Legendary Design Features

1 High-strength impeller case is heavily ribbed and machined from a single piece of cast iron and features oversized dowel pins for precise mounting and alignment of head plates.

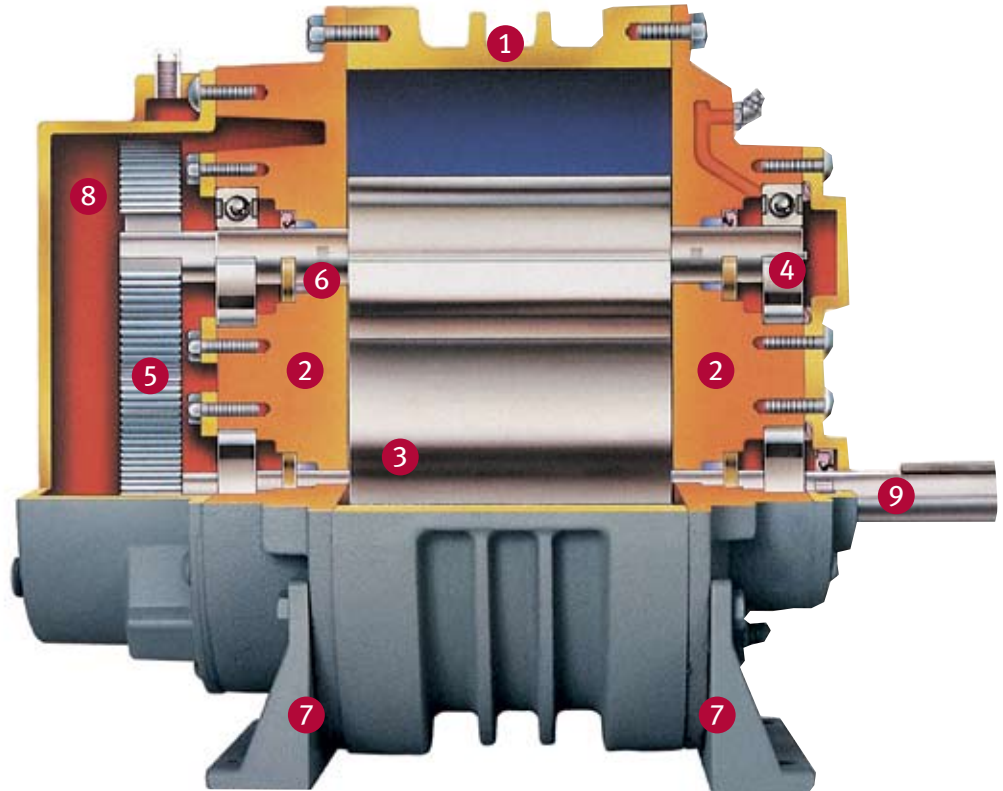
These features result in reduced noise and more stable, vibration-free operation.

2 Head plates, machined from cast iron, are ground on the interior surface to precise operating tolerances. Bearing fits are machined into head plates to assure exact bearing positioning.

This ensures accurate, fixed-dimension clearances through all blower operating conditions and temperature ranges.

3 Impellers are machined from cast iron to an exact profile and are permanently fastened to steel shafts. They are dynamically balanced for smooth operation in any assembled position.

This provides extra strength and rigidity to handle continuous maximum loads without fatigue or deflection.



2MP LHC

3MP RHC

4LVP BHC

5MP RHC

4 Anti-friction bearings are used exclusively. Smaller models are fitted with single-row ball bearings and cylindrical roller bearings; large models have double-row ball bearings and spherical roller bearings.

Optimum bearing selection provides longer blower life and added overhung shaft load capacity.

5 Timing gears, precision machined from alloy steel forgings, are permanently pinned to the shafts.

This assures non-slip timing even under the most strenuous loading conditions.

6 High temperature Viton® oil seals.

These maximize the seal life in continuous, severe-duty applications to provide leak-free operation.

7 Flex-Mount™ design is adaptable to either vertical or horizontal installation.

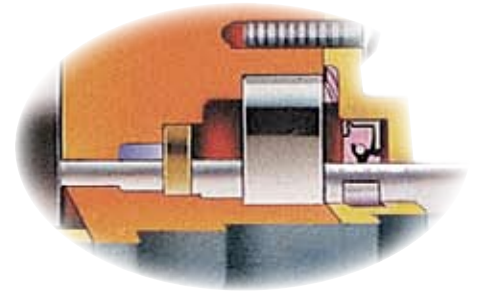
The feet are precisely machined and match the footprints of many competitive units.

8 Timing gears and gear end bearings are splash lubricated utilizing an abundant oil reservoir. A graphite gasketed, oil-tight housing encloses the timing gears. Drive end bearings are grease lubricated through fittings. Lip-type seals prevent oil and grease from entering the impeller chamber.

Superior gear and bearing lubrication is assured at all operating conditions with minimal maintenance.

9 High strength steel drive shaft is extended for V-belt drive or direct connection.

This feature provides greater blower durability and installation flexibility.



Available with Mechanical Gas Seals

The Legend design accommodates mechanical gas seals for critical gas applications with proven results based on a large installed base.

This field proven seal design allows trouble-free operation in critical gas applications.

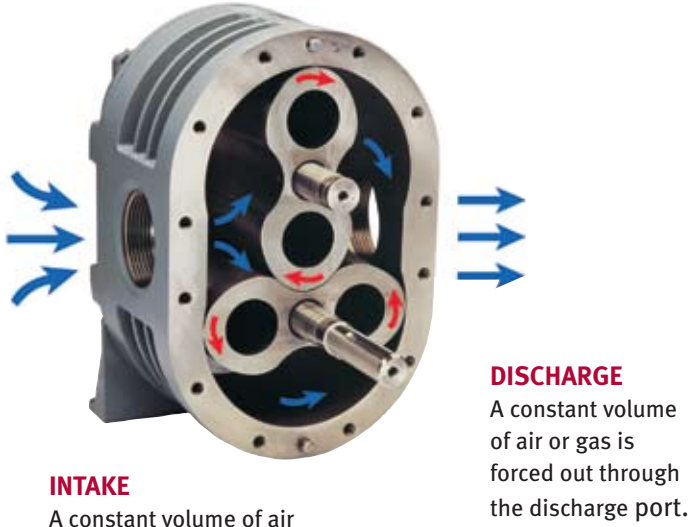


6HVP BHC

7MVP BHC

8HVP BHC

The Sutorbilt Legend Design



TRANSFER
A constant volume of trapped air or gas is transferred around the cylinder to the discharge port.

Flex-Mount™ Design Provides Maximum Installation Versatility

- Flex-Mount™ design allows the Legend application flexibility
- Creating interchangeability on existing and new applications
- Compatible as replacements for most competitive installations



Vertical Configuration, Bottom Hand Drive



Horizontal Configuration, Right Hand Drive



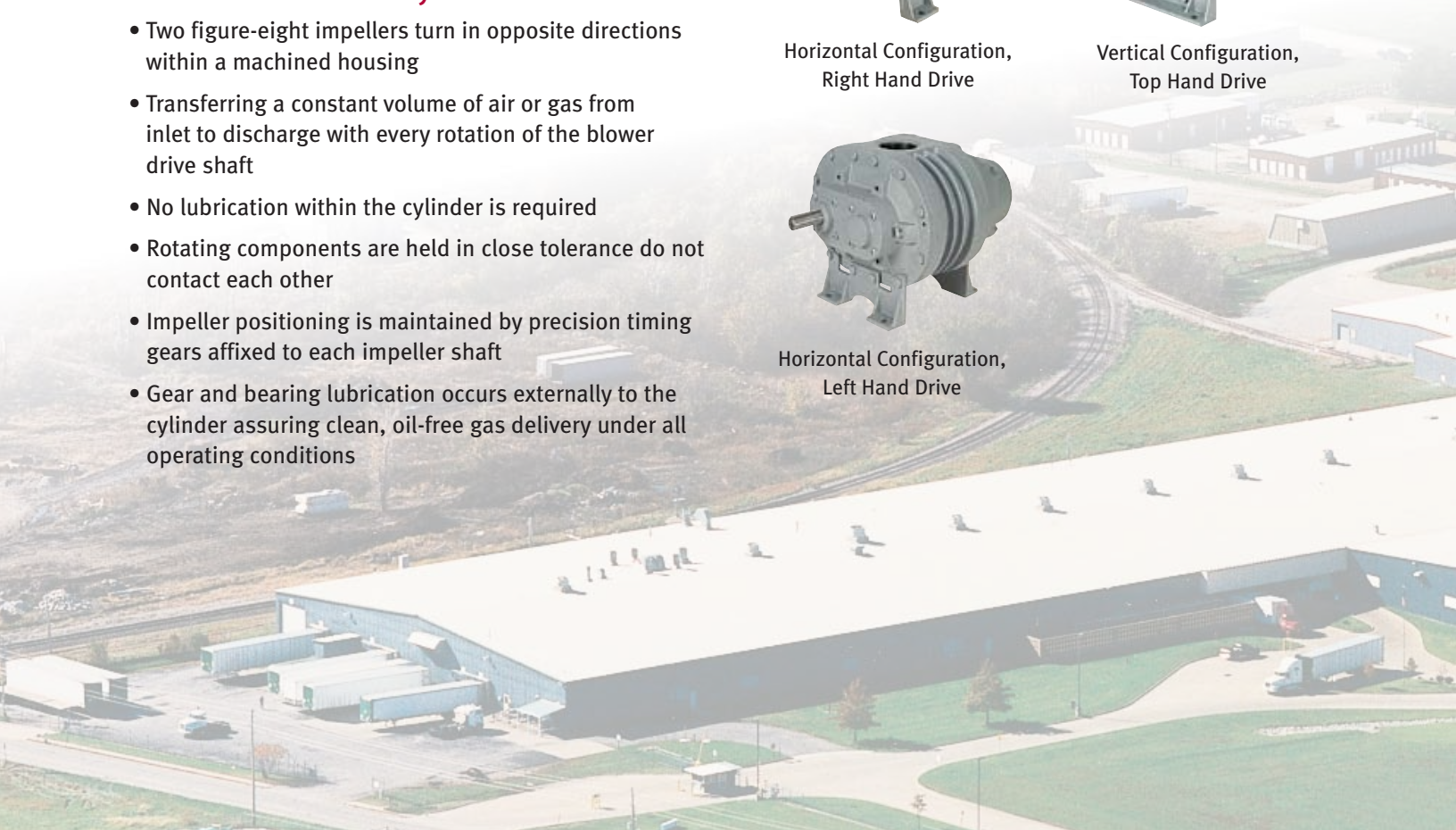
Vertical Configuration, Top Hand Drive



Horizontal Configuration, Left Hand Drive

The Sutorbilt PD Cycle

- Two figure-eight impellers turn in opposite directions within a machined housing
- Transferring a constant volume of air or gas from inlet to discharge with every rotation of the blower drive shaft
- No lubrication within the cylinder is required
- Rotating components are held in close tolerance do not contact each other
- Impeller positioning is maintained by precision timing gears affixed to each impeller shaft
- Gear and bearing lubrication occurs externally to the cylinder assuring clean, oil-free gas delivery under all operating conditions



State-of-the-Art Quality

Gardner Denver's Sutorbilt Legend blowers and vacuum pumps are engineered and manufactured under strict ISO 9001:2000 quality standards in our 330,000 square foot state-of-the-art facility in Sedalia, MO (photo below)

- Gardner Denver makes it a priority to invest in highly skilled people who take pride in producing quality products
- Our Flexible Machining System (FMS) assures consistent production of the highest quality Legend components
- Attention to detail is found throughout the manufacturing process such as utilizing advanced coordinate measuring equipment (photo A)
- Legend components are subjected to quality inspections before assembly
- Prior to shipment, every Legend is tested against rigid standards using our computer automated testing stations (photo B)

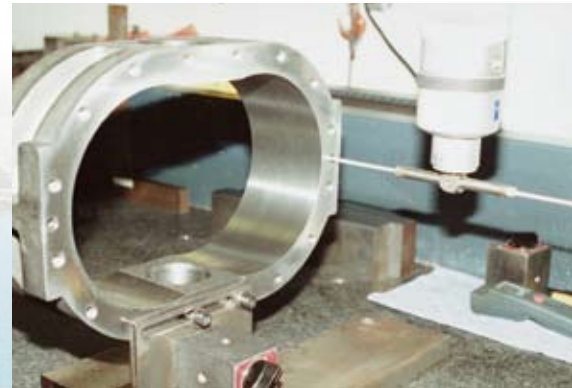


Photo A



Photo B



Sutorbilt Legend Pressure Performance Data

| LOW PRESSURE UNITS | SI ZE | DIA. INLET & OUTLET | DISPL. CU. FT./REV. | RPM | 2 PSIG | | 3 PSIG | | 4 PSIG | | 5 PSIG | | 6 PSIG | | 7 PSIG | |
|--------------------|-------|---------------------|----------------------------------|----------------------------------|------------------------------|----------------------------------|------------------------------|----------------------------------|------------------------------|----------------------------------|------------------------------|----------------------------------|------------------------------|--------------------------------|------------------------------|--------------------------|
| | | | | | CFM | BHP | CFM | BHP | CFM | BHP | CFM | BHP | CFM | BHP | CFM | BHP |
| | | | | | 2LP 2LVP | 2"-S | 0.035 | 2,800 3,250 3,560 5,275 | 76 91 102 162 | 1.1 1.3 1.4 2.0 | 71 86 97 157 | 1.6 1.8 2.0 2.8 | 67 82 93 153 | 2.1 2.4 2.6 3.7 | 63 79 89 149 | 2.5 2.9 3.2 4.6 |
| 3LP 3LVP | 2½"-S | 0.104 | 1,760 2,265 2,770 3,600 | 149 202 254 341 | 1.9 2.4 2.9 3.7 | 142 194 247 333 | 2.8 3.5 4.3 5.3 | 135 188 240 327 | 3.7 4.7 5.5 7.1 | 130 182 235 321 | 4.5 5.6 6.8 8.9 | 124 177 230 316 | 5.2 6.7 8.2 10.6 | 120 172 225 311 | 6.1 7.8 9.6 12.4 | |
| 4LP 4LVP | 3"-S | 0.170 | 1,760 2,190 2,620 3,600 | 253 326 400 566 | 3.0 3.7 4.4 5.8 | 243 316 389 556 | 4.5 5.3 6.3 8.7 | 234 307 381 547 | 5.7 7.1 8.4 11.6 | 227 300 373 539 | 7.1 8.8 10.6 14.5 | 220 293 366 533 | 8.5 10.6 12.7 17.4 | 213 286 360 526 | 9.9 12.4 14.8 20.3 | |
| 5LP 5LVP | 4"-S | 0.350 | 1,500 1,760 2,100 2,850 | 463 554 673 936 | 5.2 5.8 7.0 9.5 | 449 540 659 922 | 7.5 8.8 10.5 14.2 | 438 529 648 910 | 10.0 11.7 13.9 18.9 | 427 518 637 900 | 12.4 14.6 17.4 23.6 | 418 509 628 890 | 14.9 17.5 20.9 28.4 | 409 500 619 882 | 17.4 20.4 24.4 33.1 | |
| 6LP 6LVP | 6"-F | 0.718 | 1,170 1,760 1,930 2,350 | 739 1,162 1,284 1,586 | 8.0 12.0 13.1 16.0 | 716 1,139 1,261 1,563 | 11.9 18.0 19.7 24.0 | 697 1,120 1,242 1,544 | 15.9 24.0 26.3 32.0 | 680 1,103 1,225 1,527 | 19.9 29.9 32.8 40.0 | 664 1,088 1,210 1,512 | 23.9 35.9 39.4 48.0 | 650 1,074 1,196 1,497 | 27.9 41.9 46.0 56.0 | |
| 7LP 7LVP | 8"-F | 1.200 | 1,170 1,465 1,760 2,050 | 1,277 1,631 1,985 2,333 | 13.3 16.7 20.0 23.3 | 1,248 1,602 1,956 2,304 | 20.0 25.0 30.0 35.0 | 1,224 1,578 1,932 2,280 | 16.6 33.3 40.0 46.6 | 1,203 1,557 1,911 2,259 | 33.3 41.7 50.1 58.3 | 1,184 1,538 1,892 2,240 | 39.9 50.0 60.1 70.0 | | | |
| 8LP 8LVP | 10"-F | 1.740 | 880 1,170 1,375 1,800 | 1,366 1,871 2,228 2,967 | 14.5 19.3 22.7 29.7 | 1,329 1,834 2,191 2,930 | 21.8 28.9 34.0 44.5 | 1,298 1,803 2,159 2,899 | 29.0 38.6 45.4 59.4 | 1,271 1,775 2,132 2,871 | 36.3 48.2 56.7 74.2 | 1,246 1,750 2,107 2,847 | 43.5 57.9 68.0 89.1 | | | |

| MEDIUM PRESSURE UNITS | SIZE | DIA. INLET & OUTLET | DISPL. CU. FT./REV. | RPM | 7 PSIG | | 9 PSIG | | 10 PSIG | | 12 PSIG | | 13 PSIG | | 14 PSIG | |
|-----------------------|-------|---------------------|----------------------------------|--------------------------------|------------------------------|------------------------------|------------------------------|----------------------------------|------------------------------|--------------------------|----------------------|--------------------------|----------------------|--------------------------|---------|-----|
| | | | | | CFM | BHP | CFM | BHP | CFM | BHP | CFM | BHP | CFM | BHP | CFM | BHP |
| | | | | | 2MP 2MVP | 1"-S | 0.017 | 2,800 3,250 3,560 5,275 | 25 33 38 67 | 1.7 1.9 2.1 3.1 | 22 30 35 64 | 2.1 2.5 2.7 3.9 | 28 34 34 63 | 2.7 3.0 3.0 4.4 | 60 | 5.1 |
| 3MP 3MVP | 2"-S | 0.060 | 1,760 2,265 2,770 3,600 | 64 95 125 175 | 3.6 4.6 5.5 7.2 | 59 89 119 169 | 4.6 5.8 7.1 9.2 | 87 117 117 167 | 6.4 7.9 7.9 10.2 | 112 | 9.5 | 162 | 12.3 | | | |
| 4MP 4MVP | 2½"-S | 0.117 | 1,760 2,190 2,620 3,600 | 144 194 245 359 | 6.8 8.5 10.2 14.0 | 136 186 236 351 | 8.8 10.9 13.1 18.0 | 132 182 233 347 | 9.8 12.1 14.5 20.0 | | | | | | | |
| 5MP 5MVP | 4"-S | 0.210 | 1,500 1,760 2,100 2,850 | 237 292 363 521 | 10.5 12.3 14.6 19.9 | 227 281 353 510 | 13.4 15.8 18.8 25.5 | 222 277 348 506 | 14.9 17.5 20.9 28.4 | 213 | 17.9 | 209 | 19.4 | | | |
| 6MP 6MVP | 5"-S | 0.383 | 1,170 1,760 1,930 2,350 | 332 558 622 784 | 14.9 22.4 24.5 29.9 | 316 542 607 768 | 19.1 28.8 31.5 38.4 | 309 535 600 761 | 21.2 32.0 35.0 42.7 | 296 | 25.5 | 289 | 27.6 | 283 | 29.7 | |
| 7MP 7MVP | 6"-F | 0.733 | 1,170 1,465 1,760 2,050 | 693 909 1,125 1,338 | 28.5 35.6 42.8 49.9 | 671 887 1,103 1,316 | 36.6 45.8 55.0 64.1 | 661 877 1,093 1,306 | 40.7 50.9 61.1 71.2 | | | | | | | |
| 8MP 8MVP | 8"-F | 1.040 | 880 1,170 1,375 1,800 | 709 1,011 1,224 1,666 | 30.4 40.4 47.4 62.1 | 681 983 1,196 1,638 | 39.0 51.9 61.0 79.9 | 669 970 1,183 1,625 | 43.4 57.7 67.8 88.7 | | | | | | | |

| HIGH PRESSURE UNITS | SIZE | DIA. INLET & OUTLET | DISPL. CU. FT./REV. | RPM | 7 PSIG | | 8 PSIG | | 9 PSIG | | 11 PSIG | | 13 PSIG | | 15 PSIG | | | | |
|---------------------|-------|---------------------|----------------------------------|--------------------------|------------------------------|--------------------------|------------------------------|----------------------------------|------------------------------|--------------------------|-----------------------|--------------------------|-----------------------|--------------------------|---------|-----|------|-----|------|
| | | | | | CFM | BHP | CFM | BHP | CFM | BHP | CFM | BHP | CFM | BHP | CFM | BHP | | | |
| | | | | | 3HP 3HVP | 1¼"-S | 0.045 | 1,760 2,265 2,770 3,600 | 46 69 91 129 | 2.6 3.4 4.1 5.4 | 44 66 89 126 | 3.0 3.9 4.7 6.1 | 41 64 87 124 | 3.4 4.3 5.3 6.9 | 60 | 5.3 | 83 | 6.5 | 117 |
| 4HP 4HVP | 1½"-S | 0.069 | 1,760 2,190 2,620 3,600 | 80 110 139 207 | 4.0 5.0 6.0 8.2 | 77 107 137 204 | 4.6 5.7 6.9 9.4 | 74 104 134 201 | 5.2 6.4 7.7 10.6 | 99 | 7.9 | 129 | 9.4 | 124 | 11.1 | 192 | 15.3 | 188 | 17.7 |
| 5HP 5HVP | 2½"-S | 0.140 | 1,500 1,760 2,100 2,850 | 154 191 238 343 | 7.0 8.2 9.8 13.2 | 151 187 235 340 | 8.0 9.3 11.1 15.1 | 147 183 231 336 | 9.0 10.5 12.5 17.0 | 140 | 10.9 | 177 | 12.8 | 171 | 15.2 | 224 | 18.1 | 329 | 24.6 |
| 6HP 6HVP | 3"-S | 0.227 | 1,170 1,760 1,930 2,350 | 188 321 360 455 | 8.8 13.3 14.5 17.7 | 182 316 355 450 | 10.1 15.1 16.6 20.2 | 177 311 350 445 | 11.3 17.0 18.7 22.8 | 168 | 13.8 | 302 | 20.8 | 340 | 22.8 | 436 | 27.8 | 427 | 32.9 |
| 7HP 7HVP | 4"-S | 0.367 | 1,170 1,465 1,760 2,050 | 332 441 549 655 | 14.2 17.8 21.4 25.0 | 326 434 542 649 | 16.3 20.4 24.5 28.5 | 319 428 536 642 | 18.3 22.9 27.6 32.1 | 308 | 22.4 | 416 | 28.0 | 524 | 33.7 | 631 | 39.2 | 620 | 46.4 |
| 8HP 8HVP | 4"-S | 0.566 | 880 1,170 1,375 1,800 | 363 528 644 884 | 16.5 22.0 25.8 33.8 | 354 518 634 875 | 18.9 25.1 29.5 38.6 | 345 509 626 866 | 21.2 28.3 33.2 43.5 | 329 | 26.0 | 493 | 34.5 | 609 | 40.6 | 850 | 53.1 | 835 | 62.8 |

Performance based on standard conditions: Sea Level, 14.7 PSIA, 68°F Inlet Temperature, 36% Relative Humidity. For performance with gases other than air or at non-standard conditions, contact your Authorized Sutorbilt representative. S=Screwed connections std. NPT. F=flange connections. Intake and outlet pipe connections are same type and size.

Sutorbilt Legend Vacuum Performance Data

| LOW VACUUM UNITS | SIZE | DIA. INLET & OUTLET | DISPL. CU. FT./REV. | RPM | 2 "Hg | | 4 "Hg | | 8 "Hg | | 10 "Hg | | 12 "Hg | | 14 "Hg | |
|------------------|-------|---------------------|----------------------------------|----------------------------------|----------------------------|----------------------------------|------------------------------|---|-------------------------------|----------------------------------|-------------------------------|----------------------------------|------------------------------|---------------------------------|------------------------------|---------------------------------|
| | | | | | CFM | BHP | CFM | BHP | CFM | BHP | CFM | BHP | CFM | BHP | CFM | BHP |
| | | | | | 2LP 2LVP | 2"-S | 0.035 | 2,800 3,250 3,560 4,165 5,275 | 82 98 108 130 168 | 0.7 0.7 0.8 0.9 1.1 | 74 90 101 122 161 | 1.1 1.3 1.4 1.6 1.9 | 61 77 88 109 148 | 2.0 2.3 2.5 2.9 3.6 | 55 71 82 103 142 | 2.5 2.8 3.1 3.6 4.5 |
| 3LP 3LVP | 2½"-S | 0.104 | 1,760 2,265 2,770 3,600 | 158 211 264 350 | 1.1 1.3 1.5 1.9 | 147 200 252 338 | 1.9 2.4 2.9 3.7 | 128 180 233 319 | 3.6 4.6 5.4 7.0 | 118 171 223 309 | 4.5 5.5 6.7 8.7 | 108 160 213 299 | 5.1 6.6 8.1 10.5 | 288 495 | 12.2 20.0 | |
| 4LP 4LVP | 3"-S | 0.170 | 1,760 2,190 2,620 3,600 | 266 339 412 579 | 1.6 1.9 2.3 3.1 | 250 323 396 563 | 3.0 3.7 4.3 5.7 | 224 297 370 537 | 5.6 6.9 8.3 11.4 | 211 284 357 524 | 7.0 8.7 10.4 14.3 | 197 270 343 510 | 8.4 10.4 12.4 17.1 | 329 495 | 14.5 20.0 | |
| 5LP 5LVP | 4"-S | 0.350 | 1,500 1,760 2,100 2,850 | 480 571 690 953 | 2.6 3.1 3.6 4.8 | 459 550 669 932 | 5.1 5.7 6.8 9.3 | 424 515 634 896 | 9.8 11.5 13.7 18.6 | 406 497 616 879 | 12.2 14.3 17.1 23.2 | 388 479 598 860 | 14.7 17.2 20.5 27.9 | 459 578 840 | 20.1 24.0 32.5 | |
| 6LP 6LVP | 6"-F | 0.718 | 1,170 1,760 1,930 2,350 | 766 1,190 1,312 1,614 | 4.1 5.9 6.5 7.9 | 732 1,115 1,278 1,579 | 7.8 11.8 12.9 15.7 | 674 1,097 1,219 1,521 | 15.7 23.5 25.8 31.4 | 645 1,068 1,191 1,492 | 19.6 29.4 32.3 39.3 | 615 1,038 1,160 1,462 | 23.5 35.3 38.7 47.2 | 1,005 1,127 1,429 | 41.2 45.2 55.0 | |
| 7LP 7LVP | 8"-F | 1.200 | 1,170 1,465 1,760 2,050 | 1,312 1,666 2,020 2,368 | 6.5 8.2 9.8 11.5 | 1,268 1,622 1,976 2,324 | 13.1 16.4 19.7 22.9 | 1,195 1,549 1,903 2,251 | 26.2 32.8 39.3 45.8 | 1,159 1,513 1,867 2,215 | 32.7 40.9 49.2 57.3 | 1,121 1,475 1,829 2,177 | 39.2 49.1 59.0 68.7 | | | |
| 8LP 8LVP | 10"-F | 1.740 | 880 1,170 1,375 1,800 | 1,411 1,916 2,273 3,012 | 7.1 9.5 11.1 14.6 | 1,355 1,860 2,217 2,953 | 14.3 19.0 22.3 29.2 | 1,261 1,766 2,122 2,862 | 28.5 37.9 44.6 58.4 | 1,214 1,719 2,076 2,815 | 35.7 47.4 55.7 72.9 | 1,165 1,670 2,026 2,765 | 42.8 56.9 66.9 87.6 | | | |

| MEDIUM VACUUM UNITS | SIZE | DIA. INLET & OUTLET | DISPL. CU. FT./REV. | RPM | 6 "Hg | | 10 "Hg | | 12 "Hg | | 14 "Hg | | 15 "Hg | | 16 "Hg | | |
|---------------------|-------|---------------------|----------------------------------|--------------------------------|------------------------------|--------------------------------|------------------------------|---|------------------------------|---------------------------------|----------------------------|---------------------------------|------------------------------|-------------------------------|------------------------------|------------------------------|------------------------------|
| | | | | | CFM | BHP | CFM | BHP | CFM | BHP | CFM | BHP | CFM | BHP | CFM | BHP | |
| | | | | | 2MP 2MVP | 1"-S | 0.017 | 2,800 3,250 3,560 4,165 5,275 | 31 39 44 54 73 | 0.8 0.9 0.9 1.1 1.4 | 24 32 37 48 67 | 1.2 1.4 1.5 1.7 2.2 | | | 34 44 51 63 | 1.8 2.1 2.6 | 40 59 |
| 3MP 3MVP | 2"-S | 0.060 | 1,760 2,265 2,770 3,600 | 76 106 136 186 | 1.6 2.0 2.4 3.1 | 63 93 124 174 | 2.6 3.3 4.0 5.0 | 57 87 117 167 | 3.1 3.9 4.7 6.0 | | | 110 160 | 5.4 7.0 | 156 7.5 | | | |
| 4MP 4MVP | 2½"-S | 0.117 | 1,760 2,190 2,620 3,600 | 161 211 262 376 | 3.0 3.7 4.4 5.9 | 142 193 243 358 | 4.9 6.0 7.1 9.8 | 132 183 233 348 | 5.8 7.2 8.6 11.8 | | | 222 337 | 10.0 13.7 | 331 14.7 | 325 15.7 | | |
| 5MP 5MVP | 4"-S | 0.210 | 1,500 1,760 2,100 2,850 | 258 313 384 542 | 4.5 5.2 6.2 8.4 | 235 290 361 519 | 7.3 8.6 10.3 13.9 | 223 277 349 506 | 8.8 10.3 12.3 16.7 | | | 209 264 335 493 | 10.3 12.1 14.4 19.5 | 328 485 | 15.4 20.9 | 477 22.3 | |
| 6MP 6MVP | 5"-S | 0.383 | 1,170 1,760 1,930 2,350 | 363 589 655 815 | 6.3 9.4 10.3 12.6 | 328 554 619 780 | 10.4 15.7 17.2 21.0 | 310 536 601 762 | 12.5 18.8 20.7 25.2 | | | 290 516 581 741 | 14.6 22.0 24.1 29.3 | 279 505 570 731 | 15.7 23.5 25.8 31.4 | 267 493 558 719 | 16.7 25.1 27.5 33.5 |
| 7MP 7MVP | 6"-F | 0.733 | 1,170 1,465 1,760 2,050 | 738 954 1,170 1,383 | 12.0 15.0 18.0 21.0 | 688 904 1,121 1,333 | 20.0 25.0 30.0 35.0 | 662 878 1,094 1,307 | 24.0 30.0 36.1 42.0 | | | 633 850 1,065 1,278 | 28.0 35.0 42.1 49.0 | 618 834 1,050 1,263 | 30.0 37.5 45.1 52.5 | 601 817 1,034 1,246 | 32.0 40.0 48.1 56.0 |
| 8MP 8MVP | 8"-F | 1.040 | 880 1,170 1,375 1,800 | 765 1,067 1,280 1,722 | 12.8 17.0 20.0 26.2 | 703 1,005 1,218 1,660 | 21.3 28.3 33.3 43.6 | 670 972 1,185 1,627 | 25.6 34.0 40.0 52.3 | | | 634 936 1,149 1,591 | 29.8 39.7 46.6 61.0 | 29.8 917 1,130 1,572 | 32.0 42.5 50.0 65.4 | 594 896 1,109 1,551 | 34.1 45.3 53.3 69.7 |

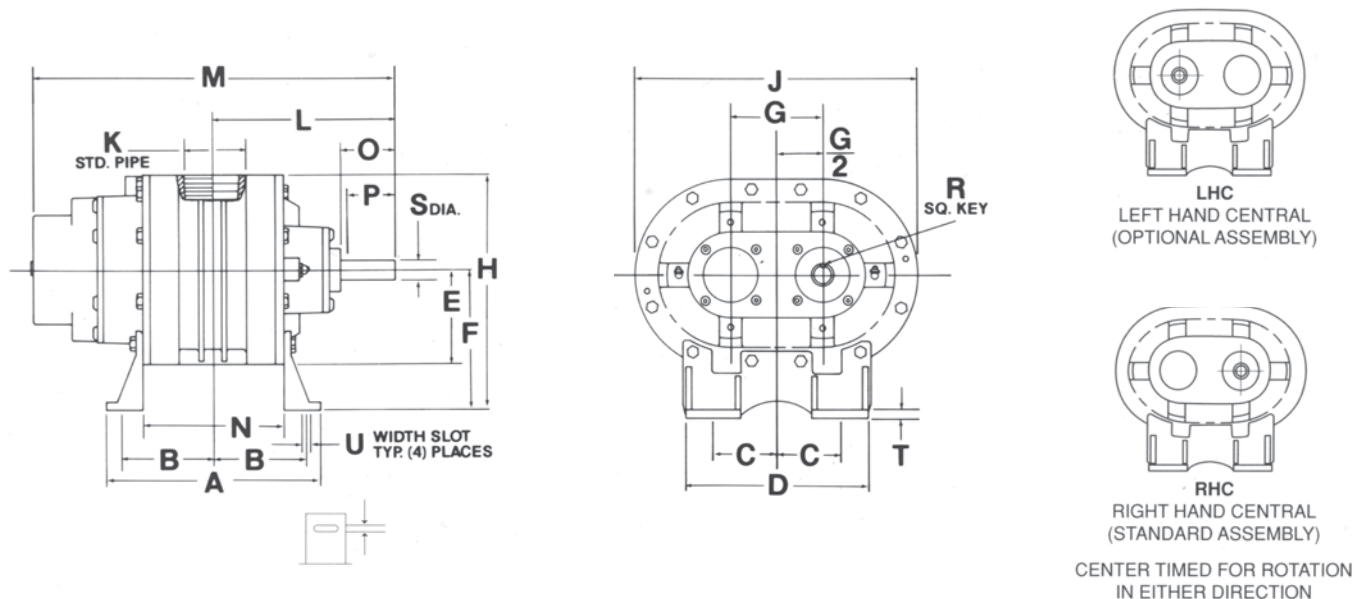
| HIGH VACUUM UNITS | SIZE | DIA. INLET & OUTLET | DISPL. CU. FT./REV. | RPM | 6 "Hg | | 8 "Hg | | 12 "Hg | | 14 "Hg | | 15 "Hg | | 16 "Hg | | |
|-------------------|-------|---------------------|----------------------------------|--------------------------|----------------------------|--------------------------|-----------------------------|----------------------------------|------------------------------|--------------------------|-----------------------|--------------------------|------------------------------|--------------------------|------------------------------|--------------------------|------------------------------|
| | | | | | CFM | BHP | CFM | BHP | CFM | BHP | CFM | BHP | CFM | BHP | CFM | BHP | |
| | | | | | 3HP 3HVP | 1¼"-S | 0.045 | 1,760 2,265 2,770 3,600 | 55 78 100 138 | 1.1 1.4 1.7 2.3 | 50 73 95 133 | 1.5 1.9 2.3 3.0 | 40 62 85 122 | 2.2 2.8 3.5 4.5 | | | 79 117 |
| 4HP 4HVP | 1½"-S | 0.069 | 1,760 2,190 2,620 3,600 | 91 121 151 218 | 1.7 2.1 2.5 3.5 | 85 115 144 212 | 2.3 2.8 3.4 4.6 | 72 102 132 199 | 3.4 4.2 5.1 6.9 | | | 95 124 192 | 4.9 5.9 8.1 | 91 120 188 | 5.3 6.3 8.7 | 184 9.3 | |
| 5HP 5HVP | 2½"-S | 0.140 | 1,500 1,760 2,100 2,850 | 170 206 254 359 | 2.9 3.4 4.1 5.6 | 161 198 245 350 | 3.9 4.6 5.5 7.4 | 144 180 228 333 | 5.9 6.9 8.2 11.2 | | | 134 171 218 323 | 6.8 8.0 9.6 13.0 | 134 165 213 318 | 8.6 10.3 10.3 14.0 | 312 14.9 | |
| 6HP 6HVP | 3"-S | 0.227 | 1,170 1,760 1,930 2,350 | 209 343 381 477 | 3.7 5.6 6.1 7.5 | 197 331 370 467 | 4.8 7.4 8.2 9.9 | 173 307 345 441 | 7.4 11.2 12.2 14.9 | | | 159 293 332 427 | 8.7 13.0 14.3 17.4 | 152 286 325 420 | 9.3 14.0 15.3 18.6 | 278 317 412 | 14.9 16.3 19.9 |
| 7HP 7HVP | 4"-S | 0.367 | 1,170 1,465 1,760 2,050 | 359 467 575 682 | 6.0 7.5 9.0 10.5 | 344 453 561 667 | 8.0 10.0 12.0 14.0 | 314 422 531 637 | 12.0 15.0 18.1 21.0 | | | 297 406 514 620 | 14.0 17.5 21.1 24.5 | 288 396 505 611 | 15.0 18.8 22.6 26.3 | 278 387 495 601 | 16.0 20.0 24.1 28.0 |
| 8HP 8HVP | 4"-S | 0.566 | 880 1,170 1,375 1,800 | 400 564 680 921 | 7.0 9.3 10.9 14.2 | 380 544 660 901 | 9.3 12.3 14.5 19.0 | 338 502 618 859 | 13.9 18.5 21.7 28.5 | | | 315 479 595 835 | 16.2 21.6 25.4 33.2 | 302 466 582 823 | 17.4 23.1 27.2 35.6 | 453 569 809 | 24.7 29.0 38.0 |

Sutorbilt Legend Dimensional Data

Horizontal Configurations

| SIZE | WT. | CONN. | A | B | C | D | E | F | G | H | J | K | L | M | N | O | P | R | S | T | U |
|------|-------|-------|--------------------------------|---------------------------------|-------------------------------|-------------------------------|---------------------------------|--------------------------------|-------------------------------|----------------------------------|--------------------------------|-------------------------------|----------------------------------|---------------------------------|--------------------------------|---------------------------------|---------------------------------|------------------------------|-------|-----------------------------|--|
| 2M | 72 | S | 5 | 2 | 2 | 6 ³ / ₈ | 3 ³ / ₄ | 3 ³ / ₄ | 2 ³ / ₄ | 7 | 9 ¹ / ₄ | 1 | 5 ⁵ / ₃₂ | 10 | 2 ³ / ₄ | 1 ¹⁵ / ₁₆ | 1 ¹¹ / ₁₆ | ³ / ₁₆ | .625 | ¹ / ₈ | ⁷ / ₁₆ |
| 2L | 86 | S | 7 | 3 | 2 | 6 ³ / ₈ | 3 ³ / ₄ | 3 ³ / ₄ | 2 ³ / ₄ | 7 | 9 ¹ / ₄ | 2 | 6 ⁵ / ₃₂ | 12 | 4 ³ / ₄ | 1 ¹⁵ / ₁₆ | 1 ¹¹ / ₁₆ | ³ / ₁₆ | .625 | ¹ / ₈ | ⁷ / ₁₆ |
| 3H | 88 | S | 6 ³ / ₄ | 2 ¹¹ / ₁₆ | 2 ⁷ / ₈ | 7 ³ / ₄ | 3 ⁷ / ₈ | 5 | 3 ¹ / ₂ | 8 ⁷ / ₈ | 11 ¹ / ₄ | 1 ¹ / ₄ | 5 ¹³ / ₁₆ | 11 ⁷ / ₈ | 3 ¹ / ₂ | 2 | 1 ¹¹ / ₁₆ | ³ / ₁₆ | .750 | ¹ / ₄ | ¹ / ₂ x ³ / ₄ |
| 3M | 110 | S | 7 ⁵ / ₈ | 3 ³ / ₈ | 2 ⁷ / ₈ | 7 ³ / ₄ | 3 ⁷ / ₈ | 5 | 3 ¹ / ₂ | 8 ⁷ / ₈ | 11 ¹ / ₄ | 2 | 6 ¹ / ₄ | 12 ³ / ₄ | 4 ⁷ / ₈ | 2 | 1 ¹¹ / ₁₆ | ³ / ₁₆ | .750 | ¹ / ₄ | ¹ / ₂ x ³ / ₄ |
| 3L | 132 | S | 10 ¹ / ₄ | 4 ⁷ / ₁₆ | 2 ⁷ / ₈ | 7 ³ / ₄ | 3 ⁷ / ₈ | 5 | 3 ¹ / ₂ | 8 ⁷ / ₈ | 11 ¹ / ₄ | 2 ¹ / ₂ | 7 ⁷ / ₁₆ | 15 ³ / ₈ | 7 | 2 | 1 ¹¹ / ₁₆ | ³ / ₁₆ | .750 | ¹ / ₄ | ¹ / ₂ x ³ / ₄ |
| 4H | 138 | S | 7 ¹ / ₄ | 3 | 3 | 8 | 4 ³ / ₁₆ | 6 ¹ / ₄ | 4 | 10 ⁷ / ₁₆ | 12 ³ / ₈ | 1 ¹ / ₂ | 6 ⁷ / ₈ | 13 ³ / ₄ | 4 | 2 ³ / ₈ | 2 ⁷ / ₈ | ³ / ₁₆ | .875 | ³ / ₈ | ¹ / ₂ x ³ / ₄ |
| 4M | 160 | S | 9 ¹ / ₂ | 4 ¹ / ₈ | 3 | 8 | 4 ³ / ₁₆ | 6 ¹ / ₄ | 4 | 10 ⁷ / ₁₆ | 12 ³ / ₈ | 2 ¹ / ₂ | 8 | 16 | 6 ¹ / ₄ | 2 ³ / ₈ | 2 ⁷ / ₈ | ³ / ₁₆ | .875 | ³ / ₈ | ¹ / ₂ x ³ / ₄ |
| 4L | 182 | S | 12 | 5 ³ / ₈ | 3 | 8 | 4 ³ / ₁₆ | 6 ¹ / ₄ | 4 | 10 ⁷ / ₁₆ | 12 ³ / ₈ | 3 | 9 ¹ / ₄ | 18 ¹ / ₂ | 8 ³ / ₄ | 2 ³ / ₈ | 2 ⁷ / ₈ | ³ / ₁₆ | .875 | ³ / ₈ | ¹ / ₂ x ³ / ₄ |
| 5H | 210 | S | 8 ¹ / ₂ | 3 ¹ / ₂ | 3 ¹ / ₂ | 9 | 5 ³ / ₁₆ | 7 | 5 | 12 ³ / ₁₆ | 15 ³ / ₈ | 2 ¹ / ₂ | 8 ³ / ₁₆ | 17 ³ / ₁₆ | 4 ⁷ / ₈ | 2 ¹ / ₂ | 2 ¹ / ₄ | ¹ / ₄ | 1.125 | ³ / ₈ | ⁹ / ₁₆ x ³ / ₄ |
| 5M | 232 | S | 10 ¹ / ₂ | 4 ¹ / ₂ | 3 ¹ / ₂ | 9 | 5 ³ / ₁₆ | 7 | 5 | 12 ³ / ₁₆ | 15 ³ / ₈ | 4 | 9 ³ / ₁₆ | 19 ³ / ₁₆ | 6 ⁷ / ₈ | 2 ¹ / ₂ | 2 ¹ / ₄ | ¹ / ₄ | 1.125 | ³ / ₈ | ⁹ / ₁₆ x ³ / ₄ |
| 5L | 306 | S | 14 ¹ / ₂ | 6 ¹ / ₂ | 3 ¹ / ₂ | 9 | 5 ³ / ₁₆ | 7 | 5 | 12 ³ / ₁₆ | 15 ³ / ₈ | 4 | 11 ³ / ₁₆ | 23 ³ / ₁₆ | 10 ⁷ / ₈ | 2 ¹ / ₂ | 2 ¹ / ₄ | ¹ / ₄ | 1.125 | ³ / ₈ | ⁹ / ₁₆ x ³ / ₄ |
| 6H | 318 | S | 9 ³ / ₄ | 3 ¹⁵ / ₁₆ | 4 | 11 | 6 | 8 ³ / ₄ | 6 | 14 ³ / ₄ | 18 | 3 | 9 ³ / ₁₆ | 19 ¹ / ₈ | 5 ³ / ₄ | 2 ¹⁵ / ₁₆ | 12 ¹ / ₃₂ | ⁵ / ₁₆ | 1.375 | ⁵ / ₈ | ³ / ₄ x 1 |
| 6M | 366 | S | 13 | 5 ⁵ / ₁₆ | 4 | 11 | 6 ³ / ₁₆ | 8 ³ / ₄ | 6 | 15 ¹⁵ / ₁₆ | 18 | 5 | 10 ¹³ / ₁₆ | 22 ³ / ₈ | 9 | 2 ¹⁵ / ₁₆ | 12 ¹ / ₃₂ | ⁵ / ₁₆ | 1.375 | ⁵ / ₈ | ³ / ₄ x 1 |
| 6L | 538 | F | 20 | 9 ¹ / ₁₆ | 4 | 11 | 7 ¹ / ₂ | 8 ³ / ₄ | 6 | 16 ¹ / ₄ | 18 | 6 | 14 ⁵ / ₁₆ | 29 ³ / ₈ | 16 | 2 ¹⁵ / ₁₆ | 12 ¹ / ₃₂ | ⁵ / ₁₆ | 1.375 | ⁵ / ₈ | ³ / ₄ x 1 |
| 7H | 482 | S | 12 | 4 ⁵ / ₈ | 5 ¹ / ₂ | 15 | 9 ¹¹ / ₁₆ | 11 | 7 | 20 ¹¹ / ₁₆ | 22 | 4 | 10 | 21 ¹ / ₈ | 5 ³ / ₄ | 3 ³ / ₁₆ | 2 ⁷ / ₈ | ³ / ₈ | 1.562 | ¹ / ₂ | ³ / ₄ x 1 |
| 7M | 638 | F | 17 ¹ / ₂ | 7 ³ / ₈ | 5 ¹ / ₂ | 15 | 8 ¹ / ₂ | 11 | 7 | 19 ¹ / ₂ | 22 | 6 | 12 ³ / ₄ | 26 ⁵ / ₈ | 11 ¹ / ₄ | 3 ³ / ₁₆ | 2 ⁷ / ₈ | ³ / ₈ | 1.562 | ¹ / ₂ | ³ / ₄ x 1 |
| 7L | 770 | F | 24 ¹ / ₂ | 10 ⁷ / ₈ | 5 ¹ / ₂ | 15 | 8 ¹ / ₂ | 11 | 7 | 19 ¹ / ₂ | 22 | 8 | 16 ¹ / ₄ | 33 ⁵ / ₈ | 18 ¹ / ₄ | 3 ³ / ₁₆ | 2 ⁷ / ₈ | ³ / ₈ | 1.562 | ¹ / ₂ | ³ / ₄ x 1 |
| 8H | 736 | S | 13 ¹ / ₂ | 5 ³ / ₄ | 6 | 16 | 10 | 12 ¹ / ₂ | 8 | 22 ¹ / ₂ | 25 ¹ / ₄ | 4 | 11 ¹¹ / ₁₆ | 24 | 7 ³ / ₄ | 3 ⁷ / ₈ | 3 ³ / ₈ | ³ / ₈ | 1.750 | ¹ / ₂ | ³ / ₄ x 1 |
| 8M | 938 | F | 19 | 8 ¹ / ₂ | 6 | 16 | 10 | 12 ¹ / ₂ | 8 | 22 ¹ / ₂ | 25 ¹ / ₄ | 8 | 14 ⁷ / ₁₆ | 29 ¹ / ₂ | 13 ¹ / ₄ | 3 ⁷ / ₈ | 3 ³ / ₈ | ³ / ₈ | 1.750 | ¹ / ₂ | ³ / ₄ x 1 |
| 8L | 1,170 | F | 27 | 12 ¹ / ₂ | 6 | 16 | 10 | 12 ¹ / ₂ | 8 | 22 ¹ / ₂ | 25 ¹ / ₄ | 10 | 18 ⁷ / ₁₆ | 37 ¹ / ₂ | 21 ³ / ₄ | 3 ⁷ / ₈ | 3 ³ / ₈ | ³ / ₈ | 1.750 | ¹ / ₂ | ³ / ₄ x 1 |

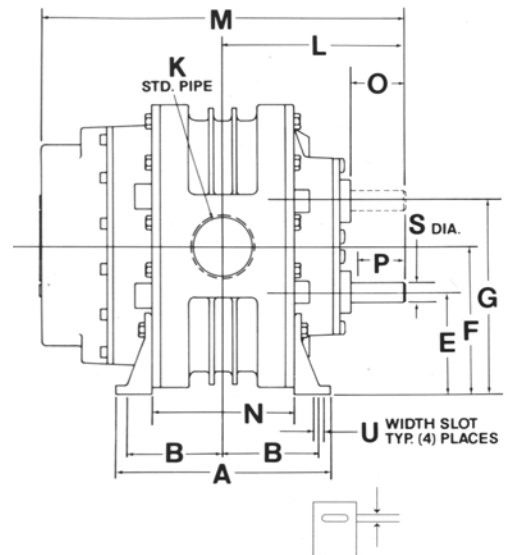
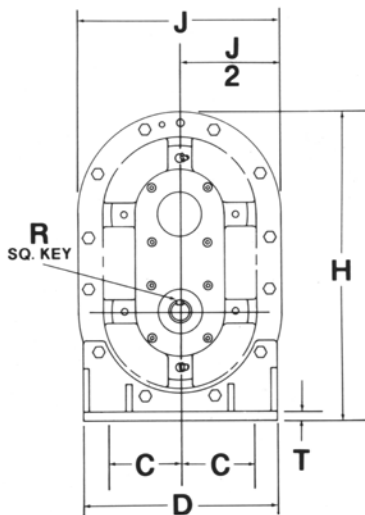
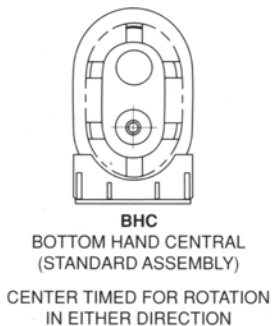
S=Threaded connections standard NPT. F=flange connections. Inlet and outlet connections are the same type and size. Dimensions are in inches. Weights are in pounds and include shipping cartons or pallets.



Vertical Configurations

| SIZE | WT. | CONN. | A | B | C | D | E | F | G | H | J | K | L | M | N | O | P | R | S | T | U |
|------|-------|-------|-----|---------------------------------|----|----|-----|-----|-----|----------------------------------|-----|----|----------------------------------|---------------------------------|-----|---------------------------------|---------------------------------|---|-------|---|-------|
| 2MV | 72 | S | 5 | 2 | 1½ | 5⅝ | 3½ | 4⅞ | 6¼ | 9½ | 6½ | 1 | 5⅝ ₃₂ | 10 | 2¾ | 1 ¹⁵ / ₁₆ | 1 ¹¹ / ₁₆ | ¾ | .625 | ⅛ | ⅞ |
| 2LV | 86 | S | 7 | 3 | 1½ | 5⅝ | 3½ | 4⅞ | 6¼ | 9½ | 6½ | 2 | 6⅝ ₃₂ | 12 | 4¾ | 1 ¹⁵ / ₁₆ | 1 ¹¹ / ₁₆ | ¾ | .625 | ⅛ | ⅞ |
| 3HV | 88 | S | 6¾ | 2 ¹¹ / ₁₆ | 2½ | 6¾ | 4½ | 6¼ | 8 | 11⅞ | 7¾ | 1¼ | 5 ¹³ / ₁₆ | 11⅞ | 3½ | 2 | 1 ¹¹ / ₁₆ | ¾ | .750 | ¼ | ½ x ¾ |
| 3MV | 110 | S | 7⅝ | 3 ¹ / ₁₆ | 2½ | 6¾ | 4½ | 6¼ | 8 | 11⅞ | 7¾ | 2 | 6¼ | 12¾ | 4⅞ | 2 | 1 ¹¹ / ₁₆ | ¾ | .750 | ¼ | ½ x ¾ |
| 3LV | 132 | S | 10¾ | 4⅞ | 2½ | 6¾ | 4½ | 6¼ | 8 | 11⅞ | 7¾ | 2½ | 7 ⁹ / ₁₆ | 15⅜ | 7 | 2 | 1 ¹¹ / ₁₆ | ¾ | .750 | ¼ | ½ x ¾ |
| 4HV | 138 | S | 7¼ | 3 | 3 | 8 | 4½ | 6½ | 8½ | 12 ¹¹ / ₁₆ | 8⅞ | 1½ | 6⅞ | 13¾ | 4 | 2⅞ | 2⅞ | ¾ | .875 | ⅜ | ½ x ¾ |
| 4MV | 160 | S | 9½ | 4⅞ | 3 | 8 | 4½ | 6½ | 8½ | 12 ¹¹ / ₁₆ | 8⅞ | 2½ | 8 | 16 | 6¼ | 2⅞ | 2⅞ | ¾ | .875 | ⅜ | ½ x ¾ |
| 4LV | 182 | S | 12 | 5⅜ | 3 | 8 | 4½ | 6½ | 8½ | 12 ¹¹ / ₁₆ | 8⅞ | 3 | 9¼ | 18½ | 8¾ | 2⅞ | 2⅞ | ¾ | .875 | ⅜ | ½ x ¾ |
| 5HV | 210 | S | 8½ | 3½ | 3½ | 9 | 5½ | 8 | 10½ | 15 ¹¹ / ₁₆ | 10⅞ | 2½ | 8 ³ / ₁₆ | 17 ³ / ₁₆ | 4⅞ | 2½ | 2¼ | ¼ | 1.125 | ⅜ | ⅝ x ¾ |
| 5MV | 232 | S | 10½ | 4½ | 3½ | 9 | 5½ | 8 | 10½ | 15 ¹¹ / ₁₆ | 10⅞ | 4 | 9 ³ / ₁₆ | 19 ³ / ₁₆ | 6⅞ | 2½ | 2¼ | ¼ | 1.125 | ⅜ | ⅝ x ¾ |
| 5LV | 306 | S | 14½ | 6½ | 3½ | 9 | 5½ | 8 | 10½ | 15 ¹¹ / ₁₆ | 10⅞ | 4 | 11 ³ / ₁₆ | 23 ³ / ₁₆ | 10⅞ | 2½ | 2¼ | ¼ | 1.125 | ⅜ | ⅝ x ¾ |
| 6HV | 318 | S | 9¾ | 3 ¹⁵ / ₁₆ | 4 | 11 | 8¾ | 11¾ | 14¾ | 20¾ | 12 | 3 | 9 ³ / ₁₆ | 19⅞ | 5¾ | 2 ¹⁵ / ₁₆ | 1 ²¹ / ₃₂ | ⅝ | 1.375 | ⅝ | ¾ x 1 |
| 6MV | 366 | S | 13 | 5 ⁹ / ₁₆ | 4 | 11 | 8¾ | 11¾ | 14¾ | 20¾ | 12⅞ | 5 | 10 ¹³ / ₁₆ | 22⅞ | 9 | 2 ¹⁵ / ₁₆ | 1 ²¹ / ₃₂ | ⅝ | 1.375 | ⅝ | ¾ x 1 |
| 6LV | 538 | F | 20 | 9 ¹ / ₁₆ | 4 | 11 | 8¾ | 11¾ | 14¾ | 20¾ | 15 | 6 | 14 ⁵ / ₁₆ | 29⅞ | 16 | 2 ¹⁵ / ₁₆ | 1 ²¹ / ₃₂ | ⅝ | 1.375 | ⅝ | ¾ x 1 |
| 7HV | 482 | S | 12 | 4⅞ | 5½ | 14 | 11 | 14½ | 18 | 25½ | 19⅞ | 4 | 10 | 21⅞ | 5¾ | 3 ³ / ₁₆ | 2⅞ | ⅜ | 1.562 | ½ | ¾ x 1 |
| 7MV | 638 | F | 17½ | 7⅞ | 5½ | 14 | 11 | 14½ | 18 | 25½ | 17 | 6 | 12¾ | 26⅝ | 11¼ | 3 ³ / ₁₆ | 2⅞ | ⅜ | 1.562 | ½ | ¾ x 1 |
| 7LV | 770 | F | 24½ | 10⅞ | 5½ | 14 | 11 | 14½ | 18 | 25½ | 17 | 8 | 16¼ | 33⅝ | 18¼ | 3 ³ / ₁₆ | 2⅞ | ⅜ | 1.562 | ½ | ¾ x 1 |
| 8HV | 736 | S | 13½ | 5¾ | 6 | 16 | 12½ | 16½ | 20½ | 29⅞ | 20 | 4 | 11 ¹¹ / ₁₆ | 24 | 7¾ | 3⅞ | 3⅞ | ⅜ | 1.750 | ½ | ¾ x 1 |
| 8MV | 938 | F | 19 | 8½ | 6 | 16 | 12½ | 16½ | 20½ | 29⅞ | 20 | 8 | 14 ⁷ / ₁₆ | 29½ | 13¼ | 3⅞ | 3⅞ | ⅜ | 1.750 | ½ | ¾ x 1 |
| 8LV | 1,170 | F | 27 | 12½ | 6 | 16 | 12½ | 16½ | 20½ | 29⅞ | 20 | 10 | 18 ⁷ / ₁₆ | 37½ | 21¼ | 3⅞ | 3⅞ | ⅜ | 1.750 | ½ | ¾ x 1 |

S=Threaded connections standard NPT. F=flange connections. Inlet and outlet connections are the same type and size. Dimensions are in inches. Weights are in pounds and include shipping cartons or pallets.





Protect your Sutorbilt investment with AEON™ PD, the only lubricant specially formulated for all blowers in any environment

- 100% synthetic for matchless service life
- Retains its superior lubricating properties a minimum of four times longer than a premium grade mineral oil at most operating conditions
- Eliminates seasonal oil viscosity grade changes
- Superior lubrication in severe, high temperature applications
- Available from your local authorized Sutorbilt distributor in convenient sizes to meet your needs
- Food grade lubricant available



Retain your Sutorbilt advantage with Genuine Gardner Denver Replacement Parts

- Gardner Denver guarantees to supply the proper parts for your specific blower every time. Replacement parts incorporate the most recent design upgrades.
- All parts meet Gardner Denver original manufacturing specifications and tolerances for guaranteed fit and function.
- Pre-packaged overhaul kits with detailed service manuals are available from your local authorized Sutorbilt distributor.



Gardner Denver®

For additional information contact your local representative or
Gardner Denver, 1800 Gardner Expressway, Quincy, IL 62305
Customer Service Department
Telephone: (800) 682-9868 FAX: (217) 221-8780
Sales and Service in all major cities.
www.GardnerDenver.com pd.blowers@gardnerdenver.com

